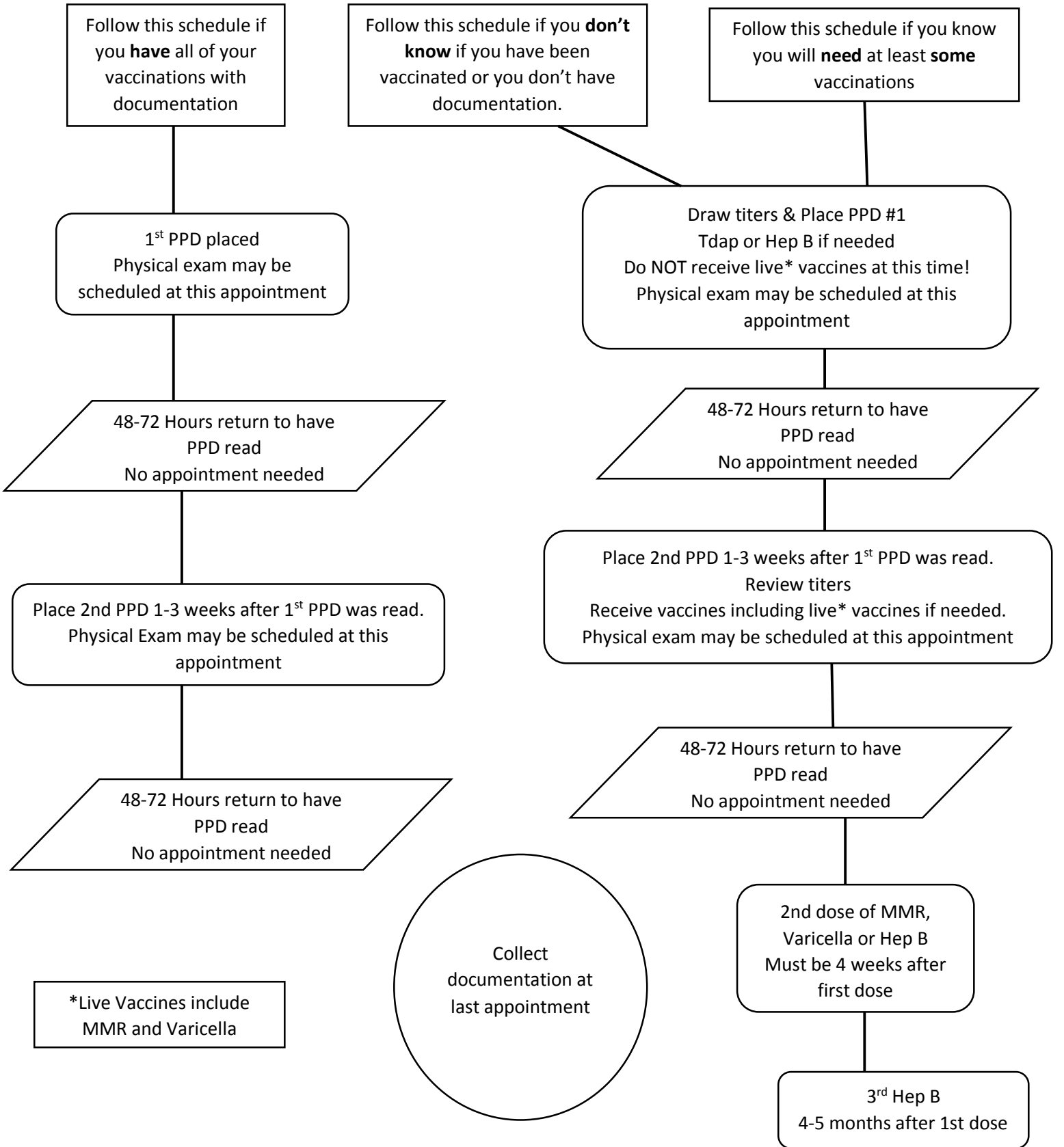


# LANE COMMUNITY COLLEGE HEALTH CLINIC VACCINATION AND PPD SCHEDULE



Tuberculin skin tests may be given on the SAME day as a \*live vaccine or 4 weeks AFTER a live vaccination. Tuberculin skin tests for a two-step series must be given at least one week apart, but no more than 4 weeks apart.

If you receive immunizations, titers or tuberculin skin tests at another clinic, please bring this flow chart with you to ensure you successfully complete all steps before your program begins.